
Server Detail Report

For the Server
AUSYDSQ2

For the period up to the week starting:
Sunday 24/May/2009

Table of contents

Configuration	3
Summary	4
CPU	4
Disk	4
Memory	4
CPU utilisation	5
% Busy	5
CPU queue depth	6
Disk	7
Utilisation	7
Throughput	7
Memory utilisation	9
Page file usage	9
Pages Input	10
Available MB	11

Configuration

The following table outlines the known configuration information for server AUSYDSQ2.

Item	value
Server Name:	AUSYDSQ2
Billing entity:	DEVL
Total Disk:	C:34122 E:571131
OS:	Microsoft Windows NT Server 5.2
Manufacturer:	Dell Inc.
Model:	PowerEdge 2950
# of CPU cores:	2
CPU speed:	1995
Memory:	4193268

Summary

CPU

The CPU utilisation for AUSYDSQ2 is decreasing by 0.65% per week. It is not expected to reach the threshold in the foreseeable future.

Disk

Free space

Free space on AUSYDSQ2 C: drive is decreasing by 175.35 MB per week. It is not expected to reach the threshold in the foreseeable future.

Free space on AUSYDSQ2 E: drive is increasing by 3764.49 MB per week. It is not expected to reach the threshold in the foreseeable future.

Throughput

MS per transfer for the AUSYDSQ2 C: drive is increasing by 0.09 seconds per week. It is not expected to reach the threshold in the foreseeable future.

MS per transfer for the AUSYDSQ2 E: drive is increasing by 0.10 seconds per week. It is not expected to reach the threshold in the foreseeable future.

Memory

Available MB

The MB available for AUSYDSQ2 is increasing by 8.40 MB per week. It is not expected to reach the threshold in the foreseeable future.

Pagefile

The pagefile usage for AUSYDSQ2 is decreasing by 0.47 % per week. It is not expected to reach the threshold in the foreseeable future.

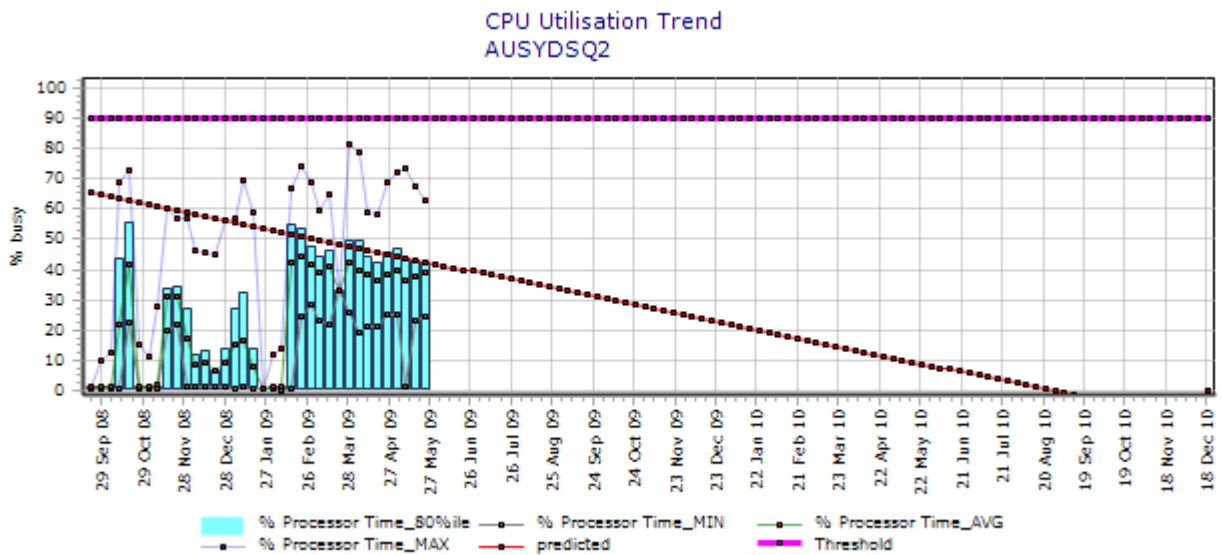
Pages Input

The number of pages input for AUSYDSQ2 is decreasing by 887.92 per week. It is currently above or is expected to cross the threshold before Dec 31 2010

CPU utilisation

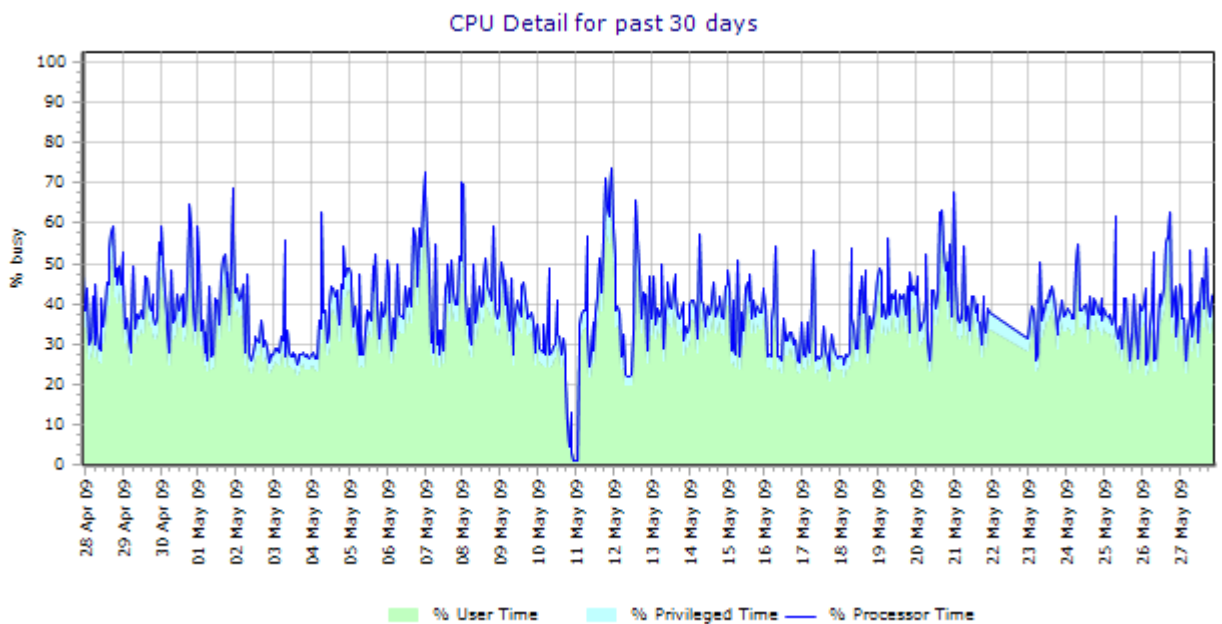
% Busy

The following chart shows the weekly CPU utilisation for AUSYDSQ2 including a forward projection of expected utilisation. The forward projection is based on the last 8 weeks of available data.



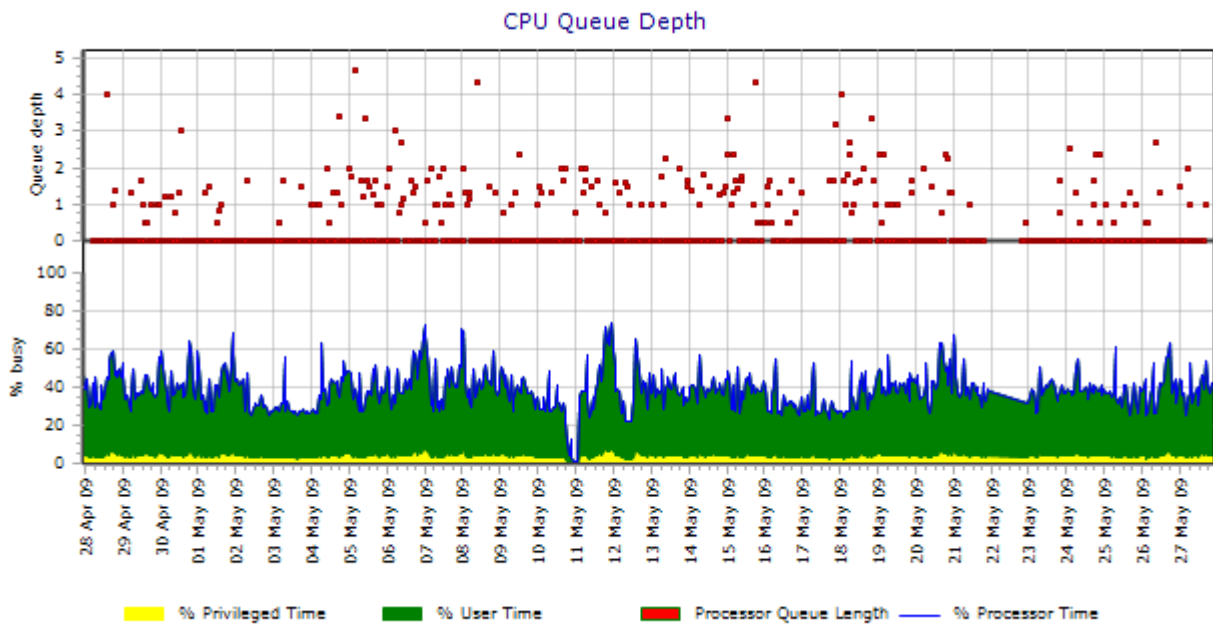
The CPU utilisation for AUSYDSQ2 is decreasing by 0.65% per week. It is not expected to reach the threshold in the foreseeable future.

This next chart shows the utilisation in detail over the past 30 days.



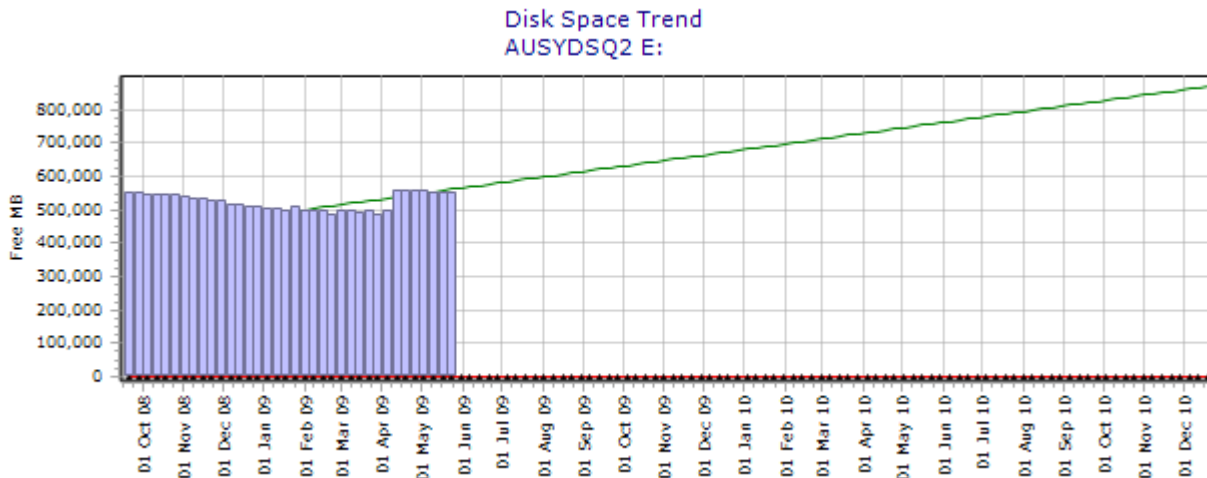
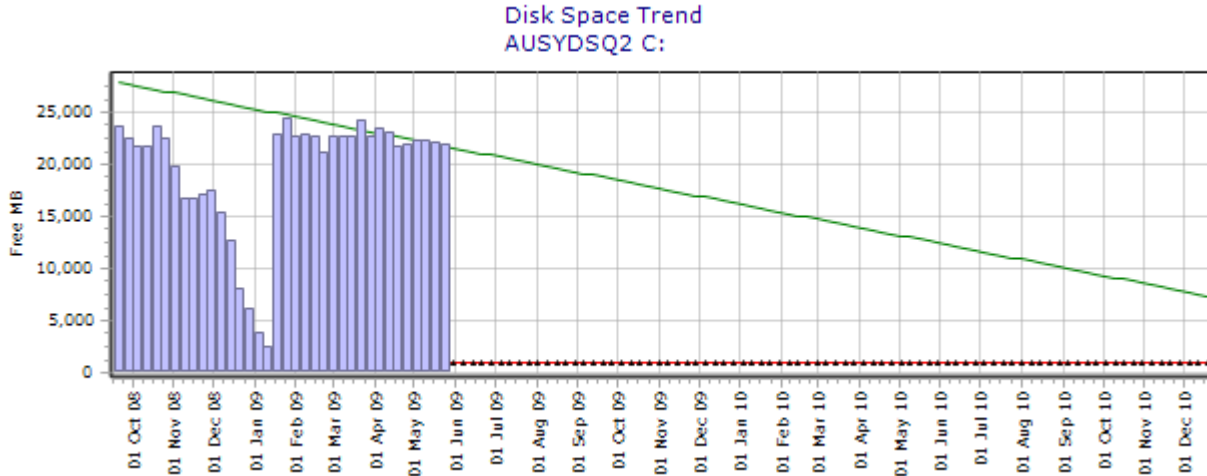
CPU queue depth

This chart depicts the CPU queue depth for AUSYDSQ2, the rule of thumb for queue depth is in the order of about 9 queued tasks per processor.



Disk Utilisation

The following charts show the available space trend for the various disks connected to AUSYDSQ2. The forward projection is based on the last 8 weeks of available data.

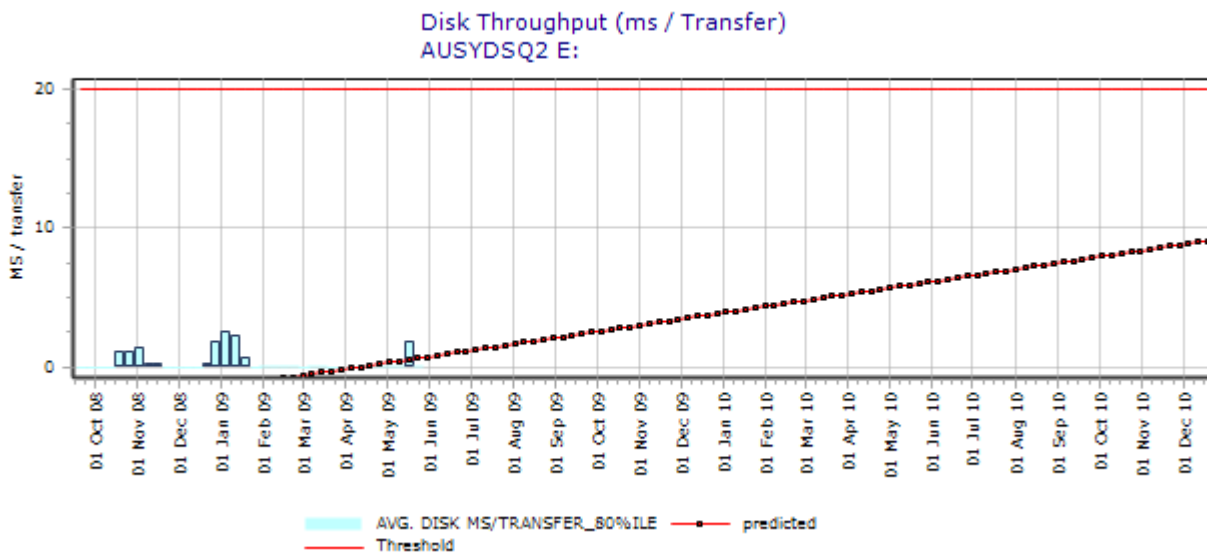
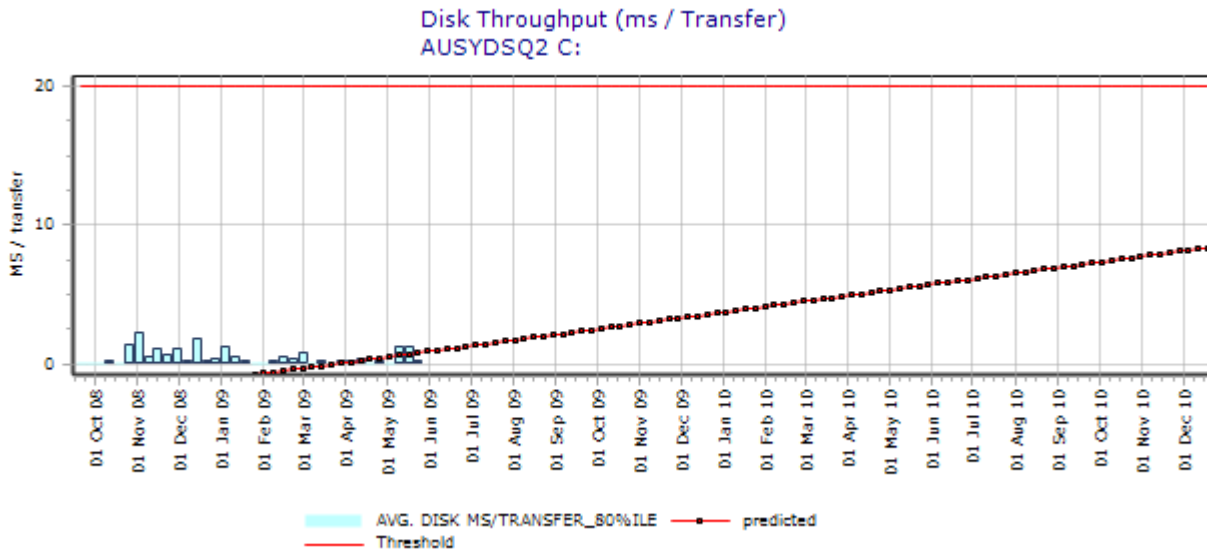


Free space on AUSYDSQ2 C: drive is decreasing by 175.35 MB per week. It is not expected to reach the threshold in the foreseeable future.

Free space on AUSYDSQ2 E: drive is increasing by 3764.49 MB per week. It is not expected to reach the threshold in the foreseeable future.

Throughput

The following charts show the milliseconds per transfer for disk activity on the disks connected to AUSYDSQ2. The forward projection is based on the last 8 weeks of available data.



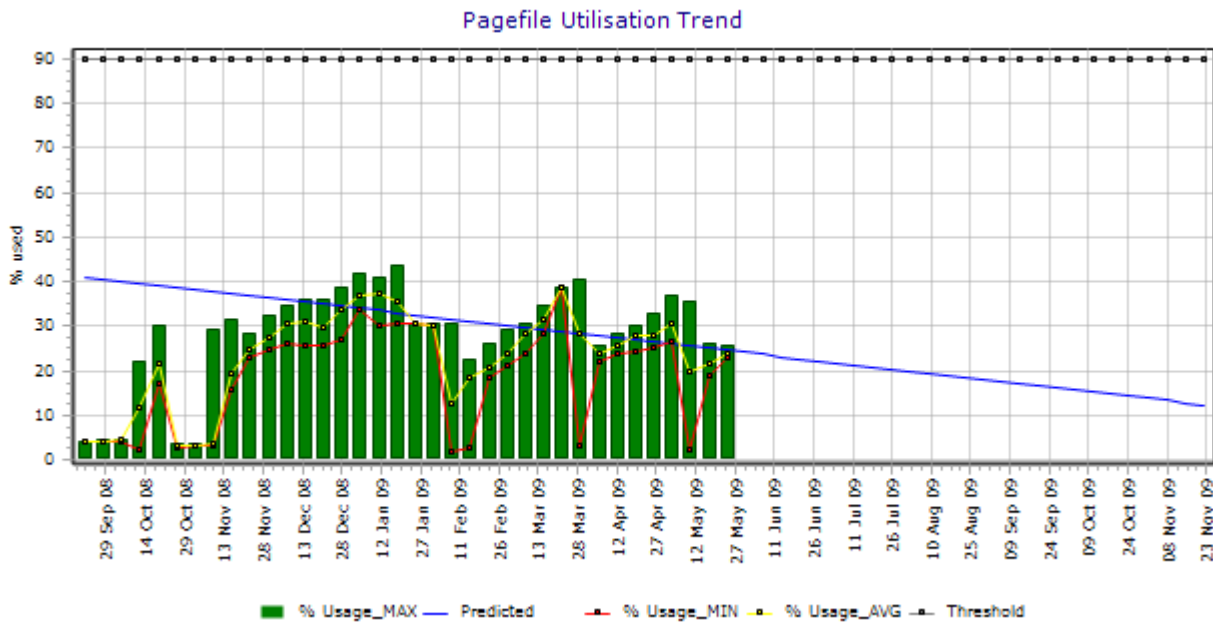
MS per transfer for the AUSYDSQ2 C: drive is increasing by 0.09 seconds per week. It is not expected to reach the threshold in the foreseeable future.

MS per transfer for the AUSYDSQ2 E: drive is increasing by 0.10 seconds per week. It is not expected to reach the threshold in the foreseeable future.

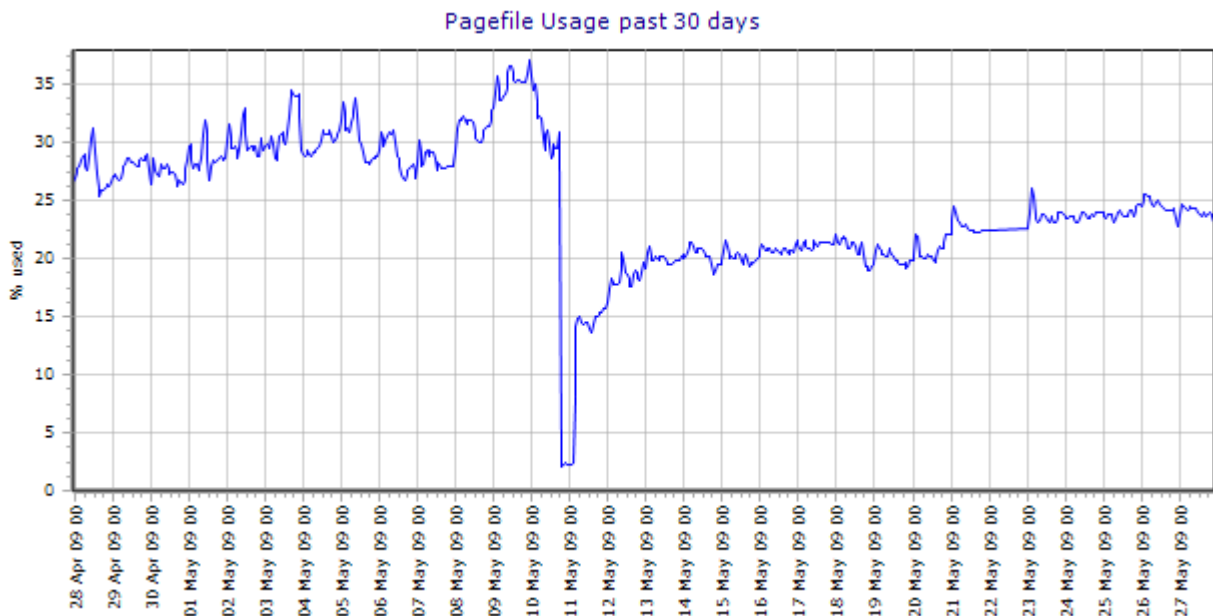
Memory utilisation

Page file usage

This chart shows the trend of page file usage for AUSYDSQ2. The forward projection is based on the last 8 weeks of available data.

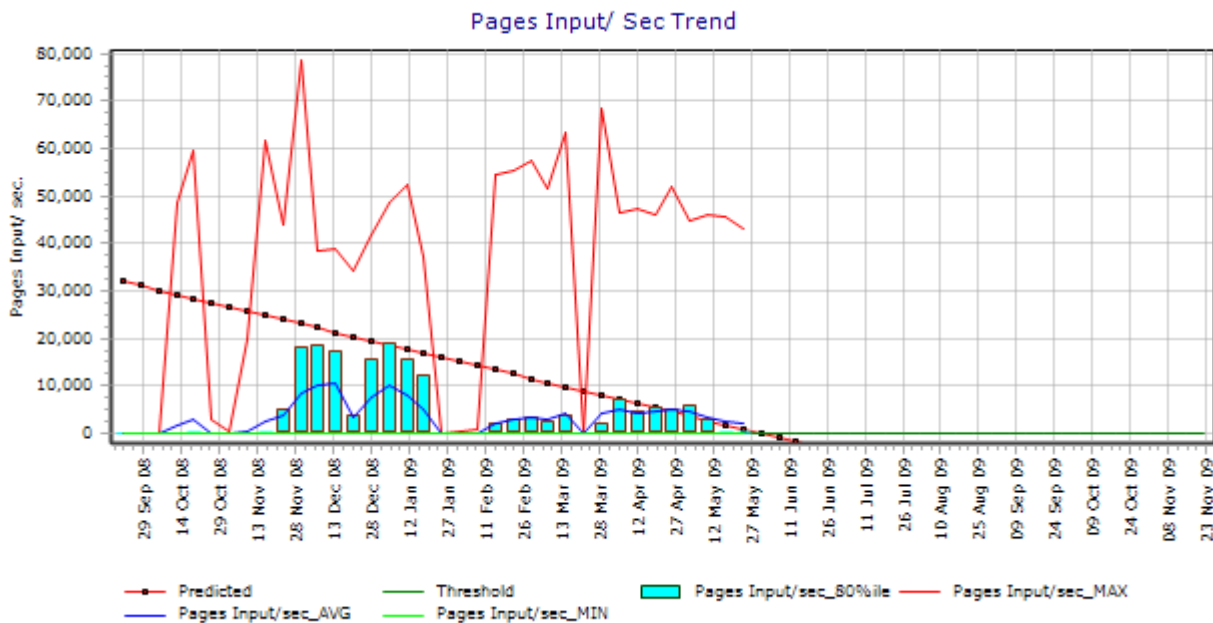


The pagefile usage for AUSYDSQ2 is decreasing by 0.47 % per week. It is not expected to reach the threshold in the foreseeable future. The page file usage over the past 30 days is presented next.

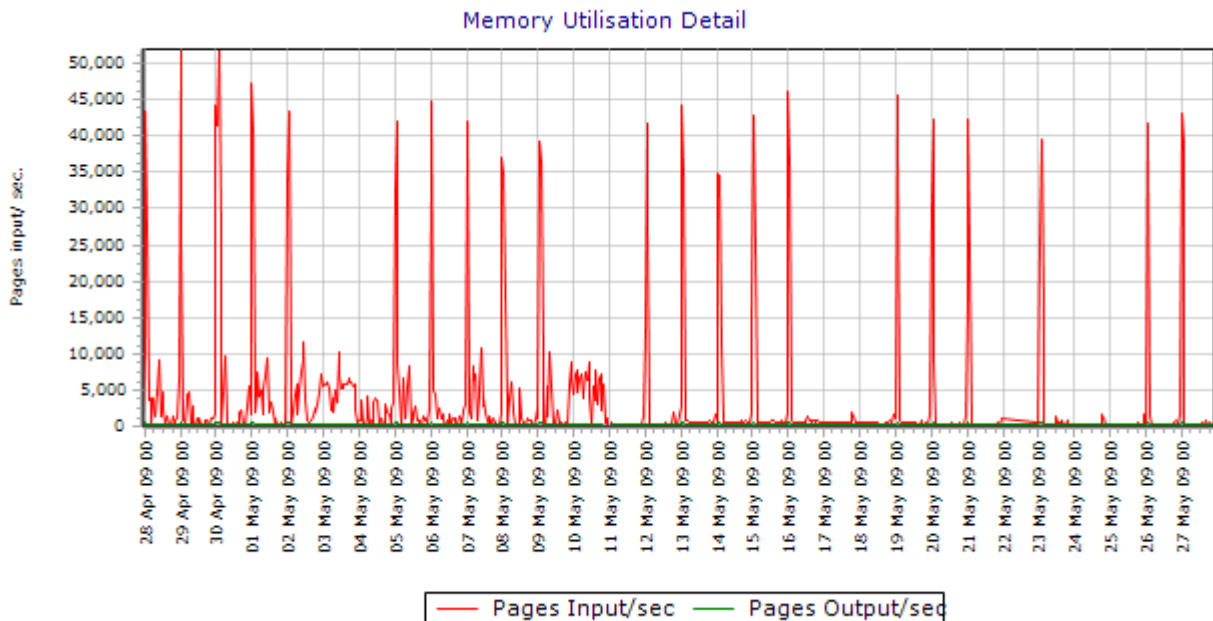


Pages Input

The following pages input trend chart shows the potential impact of hard paging activity. The forward projection is based on the last 8 weeks of available data.

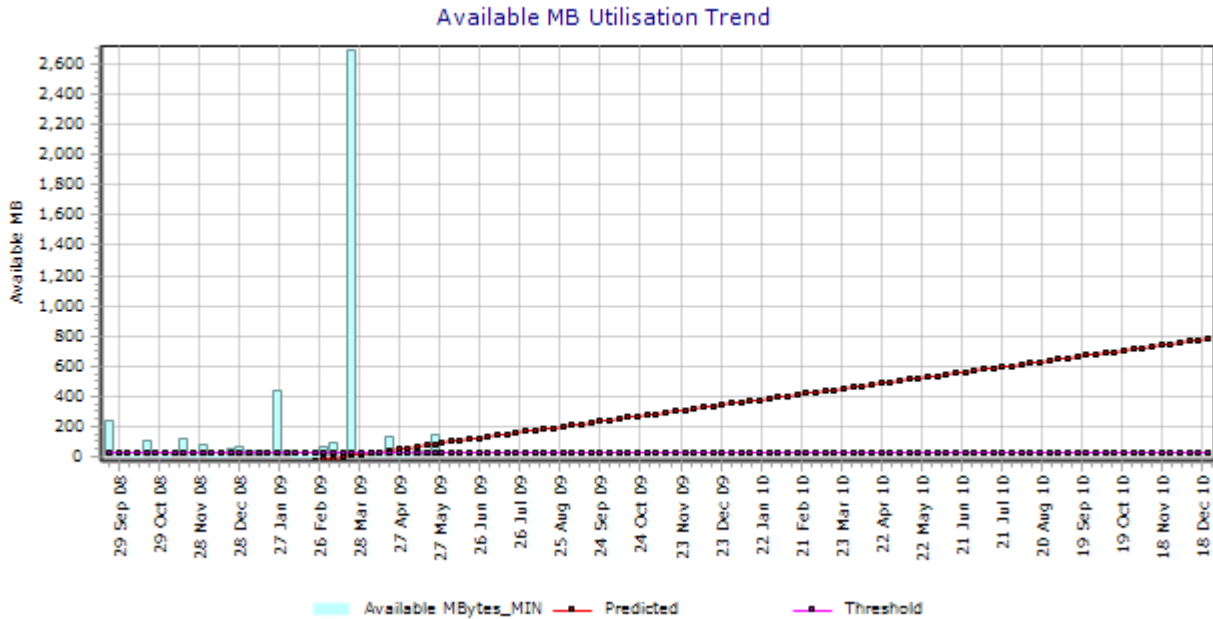


The number of pages input for AUSYDSQ2 is decreasing by 887.92 per week. It is currently above or is expected to cross the threshold before Dec 31 2010 Paging input activity for the previous 30 days in presented below.



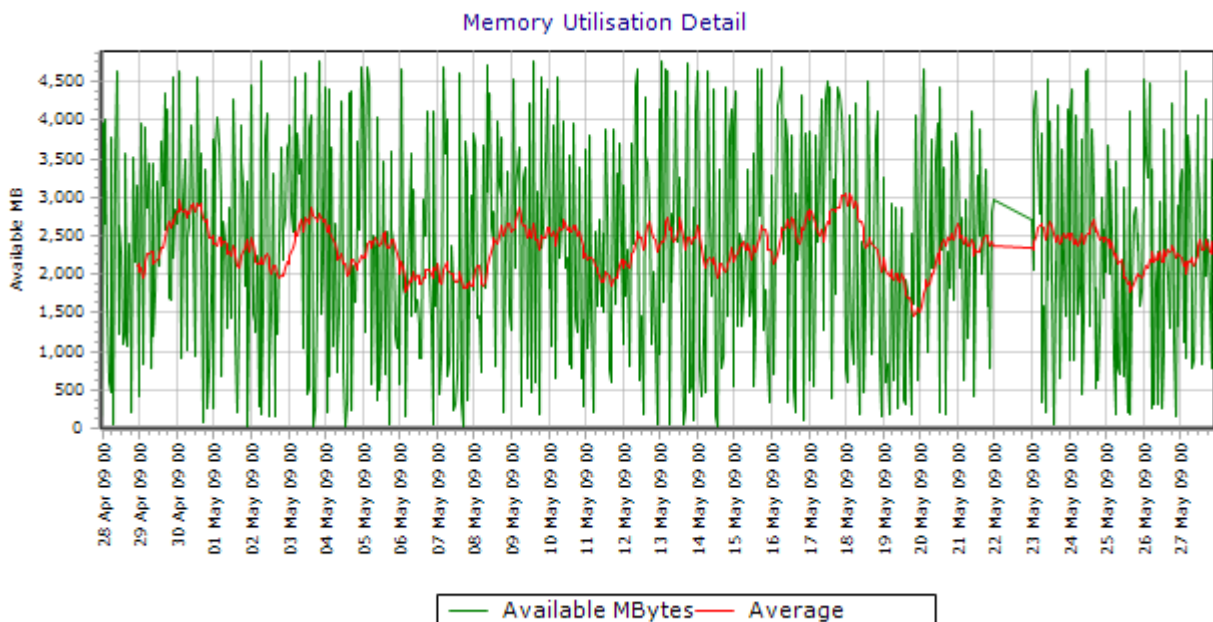
Available MB

The following chart shows the trend of Available MB for server. Available MB should not fall below 4, when this occurs the operating system will suspend scheduling new tasks until the memory constraint has been eased. The forward projection is based on the last 8 weeks of available data.



The MB available for AUSYDSQ2 is increasing by 8.40 MB per week. It is not expected to reach the threshold in the foreseeable future.

The past 7 days of detailed data is presented in the following chart.



End of report for AUSYDSQ2 for the week starting Sunday 24/May/2009.